

Patented "Cold Spark" Corona Discharge

Ozone

Fall 2003

Ozotech, Inc.

2401 Oberlin Road

Yreka, CA. 96097

Phone: 530-842-4189

Fax: 530 842-3238

Web Site: www.ozotech.com

e-mail: ozotech@ozotech.com



Table of Contents

TABLE OF CONTENTS

**Terms and Conditions of Sale, Banking,
Exception Warranty, Corporate Profile**

**Section
1**

Ozone Generators PCS Series

*** OZ1PCS * OZ2PCS * OZ4PC10 * OZ8PC20
* OZ4AW10 * OZ2SS-SS * POSEIDON**

**Section
2**

Ozone Generators with Built-in Air Preparation

*** OZ1OEAP * OZ2OEAP**

**Section
3**

Ozone Generators BTU Series

**BTU Slim Line (SL), BTU Stainless Steel (SS) and
BTU Double Wide (DW) Series**

*** OZ1BTUSL * OZ2BTUSL
* OZ4BTU * OZ6BTU * OZ4BTU-DW * OZ6BTU-DW
* OZ4BTU-SS * OZ6BTU-SS
* OZ8BTU**

**Section
4**

Ozone Generators Titanium Series

*** TI451 * TI852**

**Section
5**

Air Preparation Dryers

*** DG Dryer * HD-5 * HD-20**

**Section
6**



OZ1PCS



POWER PREP "PHOENIX"



OZ2SS-SS

TABLE OF CONTENTS

Air Preparation / Oxygen Concentrators

- Power Prep Phoenix (3 liter oxygen concentrator)
- OX-12 (6 liter industrial grade concentrator)
- Onyx (low cost 6 liter concentrator)

Section
7

Complete Bottled Water Ozone Systems

- 10 GPM Maximum
- 20 GPM Maximum
- 30 GPM Maximum
- 60 GPM Maximum

Section
8

Point-of-Use Water Treatment Systems

* Flozone 2000 * OZ1US * Low Cost Flozone 2003

Section
9

Ozone Air Purification

* OZ1 "Mini-Max"

Section
10

Specialty Ozone Systems and Ozone Accessories

- Pilot Scale Ozone System
- Ozone Resistant Solenoid Valves
- Ozone Destruct Units & Moisture Traps
- Ambient Ozone Sensors
- Dissolved Ozone Meters
- ORP Controllers & Monitors

Section
11



OZ1 Mini-Max



10 Pound Per Day Titanium



Bottled Water Systems

Section - 1

Terms & Conditions

Banking

Exception Warranty

Corporate Profile

TERMS AND CONDITIONS

ORDER ACCEPTANCE: Ozotech, Inc. (the Company) reserves the right to accept or reject any order. Orders received and acknowledged by the Company with confirmed shipping dates are considered firm orders. Changes made by the buyer to the acknowledged shipping schedule may be subject to lead time and quantity price adjustments.

Special or custom-built orders may require deposits in advance of production and are subject to other terms and conditions of sale as may be appropriate. Contact factory for details.

PRICES: Products are sold at prices in effect at time order is taken. The Company reserves the right to change prices without notice when necessary. All prices are F.O.B. factory.

TAXES: Prices do not include taxes. Consequently, the amount of any present or future sales, use, excise or other similar tax applicable to the sale of the products shall be paid by the buyer unless a properly executed tax exemption certificate acceptable to the tax authorities is provided.

DELIVERY: Contact the Company to obtain specific information regarding shipping time for any order. Orders will not be processed on delinquent accounts until all past due monies including interest charges are paid and the account becomes current.

SHIPPING: Most items are shipped via UPS or truck common carrier. Orders requested to go via a special carrier or air freight must be specified at time of ordering. All charges for shipping including insurance will be the responsibility of the buyer.

BILLING: Prior credit approval and non-delinquent status are necessary before shipping on an open account. General terms are NET 30 DAYS, unless other terms are pre-arranged. Delinquent accounts are subject to a 1.5% per month service charge and no shipments will be made until the account is current. A \$25.00 service charge will be added for dishonored checks.

OPEN ACCOUNT: This account is available to companies in the U.S.A. only. A complete credit check is required prior to shipping on an open account basis. This requires correspondence between the Company, your suppliers, and your bank. The time involved depends on the response from the references that you give us. You will be notified when your credit is approved. In the interim, all orders must be shipped COD, or can be prepaid to save on COD charges.

FOREIGN SHIPMENTS: All foreign shipments must be prepaid in U.S. funds, by wire transfer, money order, cashier's check, or irrevocable Letter of Credit (LC) subject to the Company's approval of the terms of the LC. Taxes, import duties, customs fees and related charges are the responsibility of the buyer.

DAMAGED MERCHANDISE: The Company cannot be held liable for damage or loss to a shipment by a freight carrier. Claims for damaged products, suspected damages, or container shortages must be noted on the carrier's delivery receipt. The carrier claims representative should then be notified immediately.

TERMS AND CONDITIONS

ERRORS AND RETURNS: The Company cannot assume responsibility for the errors of others. Product ordered incorrectly cannot be returned without prior approval. A "Return Material Authorization" form will be provided by the Company and must accompany the material. All returns shall have freight and related costs prepaid by customer from point of origin. Material must be new and in marketable condition. We reserve the right to charge a 25% restocking fee on all returned goods. We will assume responsibility for our own errors at no charge to the customer.

CANCELLATION OR CHANGE ORDERS OF STANDARD PRODUCTS: Generally, orders are processed as they are received. Once they are put into production, add-ons may have to be treated as a new order and may delay shipment of the original order. Cancellations and/or change orders are subject to payment by the customer for additional costs incurred prior to the change or cancellation. Special orders or orders per customer's prints should not be canceled once material has been ordered and/or production has started. If customer elects to do so, customer is liable for both material and labor costs incurred up to the time of cancellation.

TECHNICAL ADVICE: Any technical advice furnished by the Company, or any representative of the Company, concerning any use or application of its products is believed to be reliable. However, the Company makes no warranties, express or implied, of results to be obtained. Buyer assumes all responsibility for loss or damage resulting from the handling or use of any such product, or from any such technical advice.

LIMITED WARRANTY: The Company warrants to the original purchaser its new products to be free from defects in workmanship and material for a period of twelve months from the date of purchase. The Company's warranty obligation with regard to equipment not of its own manufacture is limited to the warranty actually extended to the Company by its supplier. Performance of equipment is further warranted to be in accordance with stated ratings when properly installed under normal conditions of operation. The Company assumes no responsibility for the suitability of the intended use of its products.

The Company will not be responsible for the damage or losses, direct or indirect, arising from any cause whatsoever, nor for damage to the equipment caused by outside influences including modifications, improper installation and maintenance, corrosion and/or electrolysis, improper voltage supply, lightning, or careless handling, nor for labor, transportation or other charges incurred in the replacement or repair of defective parts. There are no warranties, expressed or implied, applicable to products except as expressly stated herein. The Company will not be responsible for any statements that are made or published, written or oral, which are misleading or inconsistent with the facts as published in the literature or specifications furnished by the Company.

WARRANTY CLAIM PROCEDURE: Contact the Company for a "Return Material Authorization" form that must be included with the return. Equipment that proves defective within the warranty period will, if returned to the factory with transportation charges prepaid, be repaired or replaced free of charge, and shipped by ground service prepaid to U.S. destinations. Foreign and expedited shipping charges are the responsibility of the customer.

Lifetime Warranty

Ozotech, Inc. warrants its 15 mm patented “Cold Spark” corona discharge ozone cell to the original equipment owner for life. If your cell does not light, we will replace it for free.

Limitations as follows:

The warranty shall be null, void, and non-binding upon Ozotech, Inc. if Ozotech, Inc. (or authorized service center) determines the cause of malfunction or defect to be a result of (1) failure to perform proper maintenance as defined and recommended in the service manual, (2) failure to adhere to and provide proper operating conditions, as defined in the manual, including operation outside the recommended temperature range or operating in a wet or dirty environment, operation outside of manufacturer's specifications, and (3) adjustments made by user other than product output flow rate within ranges specified by manufacturer.

Ozotech, Inc. assumes no liability for damages incurred by deliberate, incidental misuse of this product, physical damage, interface with other defective system components, or damages incurred in transit.



Ozotech, Inc.
2401 Oberlin Road
Yreka, Ca 96097
PH 530 842-4189
FX 530 842-5319

**E-mail: sales@ozotech.com
Web Site: www.ozotech.com**

OZOTECH, INC.

Applied Ozone for Home and Industry

Ozone (tri-atomic oxygen) is recognized today as the leading technology for chemical-free sterilization and removal of natural and manmade water contaminants. The newly understood hazards associated with chlorination of water, and the resultant move by the FDA to ban chlorine from primary water treatment, leaves ozone as the only desirable and practical method for water purification.

Corporate Profile

Ozotech, Inc. is in its seventeenth year as a manufacturer of ozone systems and equipment for non-chemical water purification, wastewater treatment and other applications requiring the oxidation power of ozone. The Company also manufactures and markets a complete line of commercial and industrial air purifiers, oxygen concentrators and frame mounted bottled water sterilization systems.

The Northern California based firm sells its products domestically and internationally to commercial and industrial customers, water treatment specialists, engineering companies and 'private label' to OEM water treatment product manufacturers and marketers.

The Company's development of ozone generation equipment based on their patented "cold spark" corona discharge technology has vaulted Ozotech Inc.'s reputation within the industry, worldwide, as one of the leading producers of ozone systems for commercial, industrial and residential water treatment.

Ozotech, Inc. has achieved its success via a combination of marketing strategy, unique product technology and by providing superior quality products.

In consonance with our "Commitment to Excellence", approximately 7 years ago company management made the decision to invest in a major software package by adding ERP (Enterprise Resource Planning) to our manufacturing division. ERP provides the capability of real time receiving of incoming parts, inventory control, floor status, vendor evaluation, costing, quality trend reporting and tracking of customer order status.

The Company also possesses a very strong engineering staff that is capable of providing high level technical support to our customer base and has been instrumental in the development of our entire line of frame mounted systems for such applications as the pool & spa market, bottled water, cooling towers and industrial laundry systems.

Notable customers of Ozotech, Inc. products include:

- Pepsi Cola
- Coca Cola
- McDonalds

- Sea World
- Colex Colenta
- Minnesota Zoo

- Subway
- Shedd Aquarium
- Holiday Inn

And other major commercial and industrial firms.

Many of the nation's leading regional bottled water companies rely on Ozotech, Inc. equipment to keep their products bacteria-free.

Ozotech, Inc. President and co-founder, Ken Mouw, is recognized as one of the leading authorities on ozone technology both in the U.S. and abroad. His technology seminars are accredited by the National Water Quality Association, and his ozone technology articles have appeared in several major trade publications. He is a member of the Int'l Ozone Association, Water Quality Association, American Water Works Association and is listed in the publication, "Who's Who in Ozone".

The Company's quality program is so intensive that supplying equipment to an ISO 9000 certified customer has become routine. Incoming parts are subjected to an AQL sample inspection prior to acceptance for stock. Subsequent to that, in-process inspection points assure that quality is first and foremost. As a result of the Company's rapid growth, the company has needed to expand in manufacturing and administrative space. This was accomplished by occupying three more buildings within 3 miles of the main plant. One of the new facilities is used to manufacture the patented glass ozone cells. The second has a multiple purpose as it is being utilized for research and development, operates as our fabrication/sheet-metal shop as well as being our primary service center. The third building is being utilized to accommodate the need for more pure manufacturing space.

The local business community recognized the extreme growth potential of Ozotech, Inc. and has recently supported this growth through the approval of a state funded block grant. Monies received will be utilized to construct a modern facility that will house all corporate disciplines under one roof.

With an ever increasing demand for new alternatives to chlorine, coupled with tighter water quality regulations, the future for Ozotech, Inc. promises to be very positive indeed !!!!!!!!!!!!!!!



Complete ozone oxidation system with oxygen concentrator, refrigerated air dryer, chiller, Titanium series 10 pound per day ozone generator, 15 SCFM air compressor and 465 gallon contact tank. Sold to U.S. Government in December 2001.

Section - 2

**OZ1PCS
OZ2PCS
OZ4PC10
OZ8PC20
OZ4AW10
OZ2SS-SS
POSEIDON**

**Generator
Maintenance
Kits**

PCS GENERATOR SERIES

OZ1PCS

OZ2PCS

Features:

- Patented “Cold Spark” corona discharge
- Safety interlock switch
- Field serviceable corona cells
- **Lifetime C/D cell warranty**
- CSA & NRTL/C approved
- Wall mountable
- Lightweight aluminum chassis

Benefits:

- Compact size
- High reliability
- Lightweight and corrosion resistant
- Simple and reliable operation
- Easy to service

Part #	Model #
30010	OZ1PCS
30010-01	OZ1PCS-F
30010-02	OZ1PCS-A
30010-09	OZ1PCS-V
30010-12	OZ1PCS-SW
30010-10	OZ1PCS-V/SW
30010-21	OZ1PCS-F/V/SW
30001	OZ2PCS
30001-01	OZ2PCS-F
30001-03	OZ2PCS-A
30001-10	OZ2PCS-V
30001-11	OZ2PCS-SW
30001-12	OZ2PCS-V/SW
30001-17	OZ2PCS-F/V/SW



Shipping & Lead Time

Dimensions: D 4.5” x H 17” x W 6.25”
Shipping Weight: 11 lbs
Max. Lead Time: 7 Days
 (This is a normally stocked item)

The OZ1PCS and OZ2PCS are economical ozone generators able to incorporate patented “cold spark” corona discharge technology with low price and high quality. Applications include residential water treatment, sanitation loops, gray water treatment and ozone pilot studies.

Replacement parts are listed in the operation and maintenance manuals supplied with equipment. Ozotech, Inc. generators should be accompanied by air preparation.

Model	Conc. %	Air Flow (SCFH)	O ² Flow (SCFH)	PP Phoenix (SCFH)	G/Hr.
OZ1PCS	.11	—	—	4	.17
OZ1PCS	.04	10	—	—	.15
OZ2PCS	.20	—	—	6	.45
OZ2PCS	.07	10	—	—	.26

CONCENTRATIONS UP TO 2.5% BY WEIGHT — DEDUCT 18% OUTPUT FOR 50 HZ MODELS

PCS Generator Series

**OZ4PC10
OZ8PC20**

OZ4AW10

Features:

- Patented “Cold Spark” corona discharge
- Safety interlock switch
- Field serviceable corona cells
- **Lifetime C/D cell warranty**
- CSA & NRTL/C approved
- Wall mountable
- Lightweight aluminum chassis
- Low power consumption

Benefits:

- Compact size
- High reliability
- Lightweight and corrosion resistant
- Simple and reliable operation
- Easy to service

PART #	MODEL #
30002	OZ4PC10
30002-01	OZ4PC10-F *
30002-08	OZ4PC10-V/SW
30002-12	OZ4PC10-F/V/SW
30115	OZ4AW-SW
30115-01	OZ4AW-F/SW
30115-02	OZ4AW-SW/V
30115-03	OZ4AW-F-SW/V
30003	OZ8PC20
30003-01	OZ8PC20-F
30003-04	OZ8PC20-V/SW
30003-05	OZ8PC20-F/V/SW



* Model OZ4PC10-F is CE certified to applicable emissions standards

Shipping & Lead Time

Dimensions:	PC Models	W 10" x H 17.5" x D 6"
	AW Models	W 14" x H 16" x D 8"
Shipping Weight:	17 lbs	
Max. Lead Time:	7 Days	

The OZ4PC10 and OZ8PC20 balance compact size with powerful ozone output. Applications include residential water treatment, small residential pools, sanitation loops, gray water treatment and ozone pilot studies.

Replacement parts are listed in the operation and maintenance manuals supplied with equipment. Ozotech, Inc. generators should be accompanied by air preparation.

Model	Conc. %	Air Flow (SCFH)	O ² Flow (SCFH)	PP Phoenix (SCFH)	G/Hr.
OZ4PC10 & OZ4AW	.54	—	—	5	1.1
OZ4PC10 & OZ4AW	.15	10	—	—	.56
OZ8PC20	.71	—	—	5	1.5
OZ8PC20	.21	10	—	—	.76

CONCENTRATIONS UP TO 2.5% BY WEIGHT — DEDUCT 18% OUTPUT FOR 50 HZ MODELS

PCS-SS Generator Series

OZ2SS-SS



Features:

- Patented “Cold Spark” corona discharge
- Safety interlock switch
- Field serviceable corona cells
- **Life-time C/D cell warranty**
- CSA components
- Wall mountable
- Stainless steel chambers and chassis
- Variable output control
- On / off switch

Part #	Model #
30004-05	OZ2SS-SS/V/SW
30004-06	OZ2SS-SS/F/V/SW

Benefits:

- Compact size
- High reliability
- Lightweight and corrosion resistant
- Simple and reliable operation
- Easy to service

Shipping & Lead Time

Dimensions:	W 21" x H 11" x D 9"
Shipping Weight:	16 lbs
Max. Lead Time:	7 days

(This is a normally stocked item)

The OZ2SS-SS is engineered with 316L stainless steel corona cell manifolds in a stainless chassis for high purity applications. The stainless manifold interface allows the user to apply pressures to 60 PSI. Applications include pressurized water treatment, bacteria inactivation and laboratory use.

Replacement parts are listed in the operation and maintenance manuals supplied with equipment. Ozotech, Inc. generators should be accompanied by air preparation.

Model	Conc. %	O ² Flow (SCFH)	G/Hr.
OZ2SS-SS/V/SW	1.9	1.1	.78

CONCENTRATIONS UP TO 2.5% BY WEIGHT — DEDUCT 18% OUTPUT FOR 50 HZ MODELS

Poseidon

Part # 30281



Features:

- Variable output capacities
- Patented “Cold Spark” corona discharge
- 12 VDC, 800 ma
- Attractive high impact enclosure
- Stainless Steel C/D manifolds
- Low maintenance
- Factory tested and calibrated
- **Medium frequency, solid state electronics**
- Wall mountable
- Corrosion resistant

Part #	Model #
30281	POSEIDON

Benefits:

- **Unlike UV ozone generators, the output does not degrade over time**
- High output gas concentration for enhanced solubility
- Simple and reliable operation
- Easy to service, virtually maintenance free
- **The only true 200 mg/hr generator at useable air flow rates**

Shipping & Lead Time

Dimensions: W 4.25" x H 2.5" x L 7.5"
Shipping Weight: 5 Lbs
Max. Lead Time: 10 Days

(This is a normally stocked item)

The Poseidon, when compared to other ozone generators offered in the 200 mg/hr range, outperforms them all. Based on a patented “Cold Spark” technology, the output remains constant for years, is higher in concentration by weight at useable air flow rates, possesses superior quality and workmanship and is manufactured in the U.S.A.

Replacement parts are listed in the operation and maintenance manuals supplied with equipment. Ozotech, Inc. generators should be accompanied by air preparation.

Front Panel Dial Reading	1	2	3	4	5	Max
Percent Of Max Output	10%	20%	30%	40%	60%	100%
Ozone Output Per Hr.	22 mg	44 mg	88 mg	132 mg	176 mg	220 mg
Gas Concentration	1.0 gm/m3	1.1 gm/m3	1.3 gm/m3	1.6 gm/m3	2.5 gm/m3	2.8 gm/m3

Ozone Generator Maintenance Kits

A - Denotes positive pressure systems kits

B - Denotes negative pressure systems kits

Generator Model	Maintenance Kit #	Part #	Maintenance Kit #	Part #
OZ1PCS	MK1248PC-A	33118	MK1248PC-B	33119
OZ2PCS	MK1248PC-A	33118	MK1248PC-B	33119
OZ4PC10	MK1248PC-A	33118	MK1248PC-B	33119
OZ8PC20	MK1248PC-A	33118	MK1248PC-B	33119
OZ4AW	MK1248PC-A	33118	MK1248PC-B	33119
OZ2SS-SS	MKSS-SS-A	33112	MKSS-SS-B	33113

Ozone Generator Standard Accessories

Generator Model	Warranty Card	Check Valve	Spare Fuse	O & M Manual	Installation Manual	Venturi Guide	Spare Tubing	Accessory Packet	C/D Removal
OZ1PCS	T	T	T	T	T	T	T	T	T
OZ2PCS	T	T	T	T	T	T	T	T	T
OZ4PC10	T	T	T	T	T	T	T	T	T
OZ8PC20	T	T	T	T	T	T	T	T	T
OZ4AW	T	T	T	T	T	T	T	T	T
OZ2SS-SS	T	T	T	T	T	—	T	T	T

Ozone Generator Equipment Options

Generator Model	220V 60 or 50Hz	ORP Control	Variable Control	Auto Power On	On/Off Switch	AC Volt Meters	A/C Line Conditioner
OZ1PCS	T	T*	Standard	T	Standard	—	T*
OZ2PCS	T	T*	Standard	T	Standard	—	T*
OZ4PC10	T	T*	Standard	T	Standard	—	T*
OZ8PC20	T	T*	Standard	T	Standard	—	T*
OZ4AW	T	T*	Standard	T	Standard	—	T*
OZ2SS-SS	T	T*	Standard	T	Standard	—	T*

- Installed external to system
- Consult with factory for optional equipment costs. Optional equipment may slightly extend lead times

Section - 3

OZ1OEAP
OZ2OEAP

Generators with Built-in Air Preparation

OZ1OEAP

OZ2OEAP



Features:

- Built in flow meter
- Patented “Cold Spark” corona discharge
- Built in Power Prep Phoenix O2 concentrator
- Aluminum enclosure
- **316L stainless steel C/D manifolds**
- Low maintenance
- Factory tested and calibrated
- Low power consumption
- Wall mountable
- Corrosion resistant

Benefits:

- **No air preparation required**
- Lightweight and corrosion resistant
- Simple and reliable operation
- Easy to service
- Simplified installation

Part #	Model #
30261	OZ1OEAP
30261-25	230 Vac, 50 Hz
30261-26	230 Vac, 60 Hz
30262	OZ2OEAP
30262-25	230 Vac, 50 Hz
30262-26	230 Vac, 60 Hz

Shipping & Lead Time

Dimensions: W 17" x H 15" x D 7"
Shipping Weight: 35 lbs
Max. Lead Time: 10 Days
 (This is a normally stocked item)

The OZ1OEAP and OZ2OEAP integrate 316L stainless steel C/D cell ozone generation with the Power Prep Phoenix, known as the finest 3 liter oxygen concentrator available. Applications include fish ponds, aquariums, pools & commercial spas, kidney dialysis line sanitation, water vending machines, bottling operations, and residential water.

Replacement parts are listed in the operation and maintenance manuals supplied with equipment. Ozotech, Inc. generators should be accompanied by air preparation.

Model	Conc. %	PP Phoenix (SCFH)	G/Hr.
OZ1OEAP	.76	1.0	.28
OZ2OEAP	1.2	1.0	.45

CONCENTRATIONS UP TO 2% BY WEIGHT — DEDUCT 18% OUTPUT FOR 50 HZ MODELS

Generator with Air Preparation Maintenance Kits

Generator Model	Maintenance Kit #	Part #
OZ1OEAP	MK12OEAP-A Serial # J1200 & above	33123 (diaphragm) 33185 (piston)
OZ2OEAP	MK12OEAP-A Serial # J1200 & above	33123 (diaphragm) 33185 (piston)

Ozone Generator Standard Accessories

Generator Model	Warranty Card	Check Valve	Spare Fuse	O & M Manual	Installation Manual	Venturi Guide	Spare Tubing	Accessory Packet	C/D Removal Tool
OZ1OEAP	T	T	T	T	T	T	T	T	—
OZ2OEAP	T	T	T	T	T	T	T	T	—

Ozone Generator Equipment Options

Model	220V 60 or 50Hz	ORP Control	Variable Control	Auto Power On	On/Off Switch	AC Volt Meters	A/C Line Conditioner
OZ1OEAP	T	—	—	—	—	—	T*
OZ2OEAP	T	—	—	—	—	—	T*

* Installed external to system

* Consult with factory for optional equipment costs. Optional equipment may slightly extend lead times.

Section - 4

OZ1BTUSL

OZ2BTUSL

OZ4BTU

OZ6BTU

OZ4BTU-DW

OZ6BTU-DW

OZ4BTU-SS

OZ6BTU-SS

OZ8BTU

“Slimline” Generator Series

OZ1BTUSL

OZ2BTUSL



Features:

- Patented “Cold Spark” corona discharge
- Air cooled operation
- High ozone concentration
- Built in air flow meters
- Safety interlock switch
- **Field serviceable corona cells**
- 2 year C/D cell warranty
- UL listed components, CE certified
- Wall mountable
- Powder coated aluminum chassis
- 2 year high voltage transformer warranty
- All models come standard with on/off switch

Part #	Model #
30269	OZ1BTUSL
30269-01	OZ1BTUSL-F
30269-02	OZ1BTUSL-V/PM
30269-03	OZ1BTUSL-F/V/PM
30269-04	OZ1BTUSL-ORP
30269-05	OZ1BTUSL-F/ORP
30268	OZ2BTUSL
30268-01	OZ2BTUSL-F
30268-02	OZ2BTUSL-V/PM
30268-03	OZ2BTUSL-F/V/PM
30268-04	OZ2BTUSL-ORP
30268-05	OZ2BTUSL-F/ORP

Benefits:

- Extremely compact size
- High reliability
- Lightweight and corrosion resistant
- Simple and reliable operation
- Easy to service

- 220 Vac models are CE certified to applicable emissions standards

Shipping & Lead Time

Dimensions: W 9" x H 27.5" x D 10"
Shipping Weight: (OZ1BTUSL) 35 lbs
 (OZ2BTUSL) 40 lbs
Max. Lead Time: 7 days

This generator series has been engineered with an economic and high quality foundation. The tried and true “cold plasma” technology has been redesigned into a smaller overall package with a handsome black powder coating for an improved appearance. Applications include bottled water, cooling towers, well water, car washers, swimming pools and textile mills.

Replacement parts are listed in the operation and maintenance manuals supplied with equipment. Ozotech, Inc. generators must be accompanied by proper air preparation or warranty will be null and void.

Model	Conc. %	Air Flow	Oxygen Flow	PP Phoenix	Onyx or OX12	G/Hr.
OZ1BTUSL	1.0	3	—	—	—	1.2
OZ1BTUSL	1.2	—	10.0	—	—	4.7
OZ1BTUSL	1.1	—	—	6	—	2.4
OZ1BTUSL	1.2	—	—	—	10	4.6
OZ2BTUSL	1.0	6	—	—	—	2.1
OZ2BTUSL	2.2	—	10.0	—	—	8.3
OZ2BTUSL	1.6	—	—	6	—	3.9
OZ2BTUSL	1.7	—	—	—	10	6.6

Concentrations up to 3.5% by weight — Deduct 18% for 50 Hz models

BTU Generator Series

OZ4BTU

OZ6BTU

Features:

- Patented “Cold Spark” corona discharge
- Air cooled operation
- High ozone concentration
- Built in air flow meters
- Safety interlock switch
- **Field serviceable corona cells**
- 2 year C/D cell warranty
- UL listed components
- Wall mountable
- Industrial grade steel enclosure
- 2 year high voltage transformer warranty

Benefits:

- Compact size
- Electronically Monitored
- High reliability
- Lightweight and corrosion resistant
- Simple and reliable operation
- Easy to service

Part #	Model #
30029	OZ4BTU
30029-01	OZ4BTU-F
30029-05	OZ4BTU-V/PM
30029-06	OZ4BTU-F/V/PM
30271	OZ4BTUSL
30023	OZ6BTU
30023-01	OZ6BTU-F
30023-02	OZ6BTU-V/PM
30023-03	OZ6BTU-F/V/PM
30272	OZ6BTUSL



Shipping & Lead Time

Dimensions: 4 Cell: W 22" x H 29.5" x D 8"
 6 Cell: W 30" x H 36.0" x D 10"
Shipping Weight: 200 lb minimum
Max. Lead Time: 21 days

This powerful generator series has been engineered with an economic and high quality foundation. Applications include bottled water, cooling towers, well water, car washers, swimming pools and textile mills.

Replacement parts are listed in the operation and maintenance manuals supplied with equipment. Ozotech, Inc. generators must be accompanied by proper air preparation or warranty will be null and void.

Model	Conc. %	Air Flow (SCFH)	Oxygen Flow (SCFH)	Onyx /OX12 Flow (SCFH)	G/Hr.	Lbs./Day
OZ4BTU	1.0	12	—	—	4.4	.23
OZ4BTU	2.2	—	20	—	16.5	.87
OZ4BTU	2.2	—	—	20**	16.5	.87
OZ6BTU	1.0	18	—	—	6.5	.35
OZ6BTU	2.2	—	—	24**	20.0	1.0
OZ6BTU	2.2	—	30	—	25.0	1.3

Concentrations up to 4% by weight (** Two Onyx or OX-12 units) Deduct 18% output for 50 Hz models

BTU “Econo” Series

OZ4BTU-DW

OZ6BTU-DW



Features:

- Patented “Cold Spark” corona discharge
- Air cooled operation
- High ozone concentration
- Built in air flow meters
- Safety interlock switch
- **Field serviceable corona cells**
- 2 year C/D cell warranty
- UL listed components
- Wall mountable
- Lightweight aluminum chassis
- 2 year high voltage transformer warranty

Part #	Model #
30271	OZ4BTU-DW
30271-01	OZ4BTU-DW-F
30272	OZ6BTU-DW

Benefits:

- Compact size
- High reliability
- Lightweight and corrosion resistant
- Simple and reliable operation
- Extremely competitive pricing

NOTE:

“Econo” series generators are considered to be a “BARE-BONES” offering, where low cost, without sacrifice for quality, is the major consideration. Options, such as built-in ORP, variable ozone output control and analog panel meter, are not available for this series. The OZ6BTU-DW is only available in 115 Vac, 50 or 60 Hz configuration.

Shipping & Lead Time

Dimensions: 4 Cell: W 19" x H 39.0" x D 8"
 6 Cell: W 19" x H 39.0" x D 8"
Shipping Weight: 200 lb minimum
Max. Lead Time: 30 days

This powerful generator series has been engineered with an economic and high quality foundation. Applications include aquaculture, commercial aquariums, bottled water, cooling towers, well water, car washers, swimming pools and textile mills.

Model	Conc. %	Air Flow (SCFH)	Oxygen Flow (SCFH)	Onyx / OX12 Flow (SCFH)	G/Hr.	Lbs./Day
OZ4BTU-DW	1.0	12	—	—	4.4	.23
OZ4BTU-DW	2.2	—	20	—	16.5	.87
OZ4BTU-DW	2.2	—	—	20**	16.5	.87
OZ6BTU-DW	1.0	18	—	—	6.5	.35
OZ6BTU-DW	2.2	—	—	24**	20.0	1.0
OZ6BTU-DW	2.2	—	30	—	25.0	1.3

Concentrations up to 4% by weight

(** Two Onyx or OX-12 Units)

Deduct 18% output for 50 Hz

BTU Stainless Steel Generator Series

OZ4BTU-SS

OZ6BTU-SS



Features:

- Patented “Cold Spark” corona discharge
- Air cooled operation
- High ozone concentration
- Incorporated air flow meters
- Safety interlock switch
- **Field serviceable Stainless Steel corona cells**
- 2 year C/D cell warranty
- UL listed components
- Wall mountable
- Industrial grade steel enclosure
- 2 year high voltage transformer warranty

Part #	Model #
30110	OZ4BTU-SS/V/PM
30110-01	OZ4BTU--SS/F/V/PM
30111	OZ6BTU-SS/V/PM
30111-01	OZ6BTU-SS/F/V/PM

Benefits:

- Compact size
- High reliability
- Lightweight and corrosion resistant
- Simple and reliable operation
- Easy to service

Shipping & Lead Time

Dimensions: 4 cell: W 24" x H 36" x D 10"
 6 cell: W 30" x H 36" x D 10"
Shipping Weight: 200 lb. minimum
Max. Lead Time: 30 days

These precision machined 316L stainless steel chamber generators incorporate Ozotech, Inc.’s patented cold spark corona cells. Electrodes are mounted vertically and are hinged to allow easy access.

Replacement parts are listed in the operation and maintenance manuals supplied with equipment. Ozotech, Inc. generators must be accompanied by proper air preparation or warranty will be null and void.

Model	Conc. %	Air Flow (SCFH)	Oxygen Flow (SCFH)	G/Hr.	Lbs./Day
OZ4BTU-SS	1.0 %	16	—	5.6	.33
OZ4BTU-SS	1.0 %	—	40	15.2	.8
OZ4BTU-SS	2.0 %	—	23	17.6	.93
OZ6BTU-SS	1.0 %	22	—	7.7	.41
OZ6BTU-SS	1.0 %	—	60	22.5	1.34
OZ6BTU-SS	2.0 %	—	30	23.2	1.23

Concentrations up to 4.5% by weight — Deduct 18% Output for 50 Hz Models

BTU Generator Series

OZ8BTU



Features:

- Patented “Cold Spark” corona discharge
- Air cooled operation
- High ozone concentration
- Incorporated air flow meters
- Safety interlock switch
- **Field serviceable corona cells**
- 2 year C/D cell warranty
- UL listed components
- Wall mountable
- Industrial grade steel enclosure
- 2 year high voltage transformer warranty

Part #	Model #
30275	OZ8BTU
30275-01	OZ8BTU-F

Benefits:

- Compact size
- High reliability
- Lightweight and corrosion resistant
- Simple and reliable operation
- Easy to service

Shipping & Lead Time

Dimensions:	W 30" x H 48" x D 9"
Shipping Weight:	300 lb. minimum
Max. Lead Time:	30 days

This is the most powerful generator of the BTU series. It has been engineered with an economic and high quality foundation. Applications include bottled water, cooling towers, well water, car washers, swimming pools and textile mills.

Replacement parts are listed in the operation and maintenance manuals supplied with equipment. Ozotech, Inc. generators must be accompanied by proper air preparation or warranty will be null and void.

Model	Conc. %	Air Flow (SCFH)	Oxygen Flow (SCFH)	Onyx / OX-12 Flow (SCFH)	G/Hr.	Lbs./Day
OZ8BTU	1.0	24	—	—	8.2	.43
OZ8BTU	2.2	—	40	—	33.0	1.75

Concentrations up to 4% by weight — Deduct 18% output for 50 Hz models

Ozone Generator and Air Preparation Maintenance Kits

A - Denotes positive pressure systems kits

B - Denotes negative pressure systems kits

GENERATOR	MAINTENANCE #	PART #	MAINTENANCE #	PART #
OZ1BTU-SL	MK12BT-A	33115	MK12BT-B	33116
OZ2BTU-SL	MK12BT-A	33115	MK12BT-B	33116
OZ4BTU	MK46BT-A	33114	NA	NA
OZ6BTU	MK46BT-A	33114	NA	NA
OZ4BTU-DW	MK46BT-A	33114	NA	NA
OZ6BTU-DW	MK46BT-A	33114	NA	NA
OZ4BTU-SS	MK46BT-SS-A	33122	NA	NA
OZ6BTU-SS	MK46BT-SS-A	33122	NA	NA
OZ8BTU	MK8BT-A	Call Factory	NA	NA

Ozone Generator Standard Accessories

Generator	Warranty Card	Check Valve	Spare Fuse	O & M Manual	Installation Manual	Venturi Guide	Spare Tubing	Accessory Packet	C/D Removal
OZ1BTU-SL	T	T	T	T	T	T	T	T	—
OZ2BTU-SL	T	T	T	T	T	T	T	T	—
OZ4BTU	T	T KYNAR	T	T	T	T	T	T	—
OZ6BTU	T	T KYNAR	T	T	T	T	T	T	—
OZ4BTU-DW	T	T KYNAR	T	T	T	T	T	T	—
OZ6BTU-DW	T	T KYNAR	T	T	T	T	T	T	—
OZ4BTU-SS	T	T KYNAR	T	T	T	T	T	T	—
OZ6BTU-SS	T	T KYNAR	T	T	T	T	T	T	—
OZ8BTU	T	T KYNAR	T	T	T	T	T	T	—

Ozone Generator Equipment Options

MODEL	220V 60 OR 50Hz	ORP CONTROL	VARIABLE CONTROL	AUTO POWER ON	ON/OFF SWITCH	AC VOLT METERS	A/C LINE CONDITIONER
OZ1BTU-SL	T	T	T	—	T	T	T*
OZ2BTU-SL	T	T	T	—	T	T	T*
OZ4BTU	T	T	T	—	T	T	T*
OZ6BTU	T	T	T	—	T	T	T*
OZ4BTU-DW	T	T*	—	—	T	T	T*
OZ6BTU-DW	T	T*	—	—	T	T	T*
OZ4BTU-SS	T	T	T	—	T	T	T*
OZ6BTU-SS	T	T	T	—	T	T	T*
OZ8BTU	T	T	T	—	T	T	T*

* External to generator

* Consult with factory for optional equipment costs. Optional equipment may slightly extend lead times.

Section - 5

TI-451
TI-852

“TITANIUM” SERIES CD OZONE GENERATORS

MODELS TI-451 AND TI-852

Features:

- **Extremely** energy efficient (as low as 145 watts per pound of O³)
- **High concentration** outputs up to 10% by weight
- Advanced water-cooled “*Delta Cell*” technology with moisture condensation protection
- Variable output control
- Adjustable cell pressures (0-15 PSI)
- Process monitor/controller compatible (ORP or DO₃)
- **State-of-the-art** medium frequency current driver
- 2 year high voltage transformer warranty
- Cells **do not** have to be pressurized to perform
- **Field serviceable stainless steel cells with replaceable glass dielectrics**
- Wall mount or optional stand
- Feed gas flow meter



Part #	Model #
30288	TI-451
30289	TI-852

Bonus Features:

Standard fail-safe indicators

- Cooling water high temp failure
- Cooling water low temp failure
- Cooling water flow failure

Available Options

- Visible water flow meter
- Water pressure limit switch
- Embedded ozone gas monitor
- High feed gas dewpoint failsafe
- Ambient ozone alarm fail-safe

Benefits:

- High reliability
- Simple and reliable operation
- Excellent solubility due to high ozone concentration

SHIPPING & LEAD TIME

Dimensions:	TI-451	W 30" x H 36" x D 13"
	TI-852	W 36" x H 42" x D 13"
Shipping Wt.:	TI-451	250 lbs
	TI-852	325 lbs
Est. Lead Time:		4 - 6 weeks

TECHNICAL SPECIFICATIONS

Power Source:	220 Vac, single or three phase
Current Draw:	6 amps maximum (TI-451) 12 amps maximum (TI-852)
Cooling Water	1.5 GPM @ 20 psi maximum Temp range (55 min-85 max)

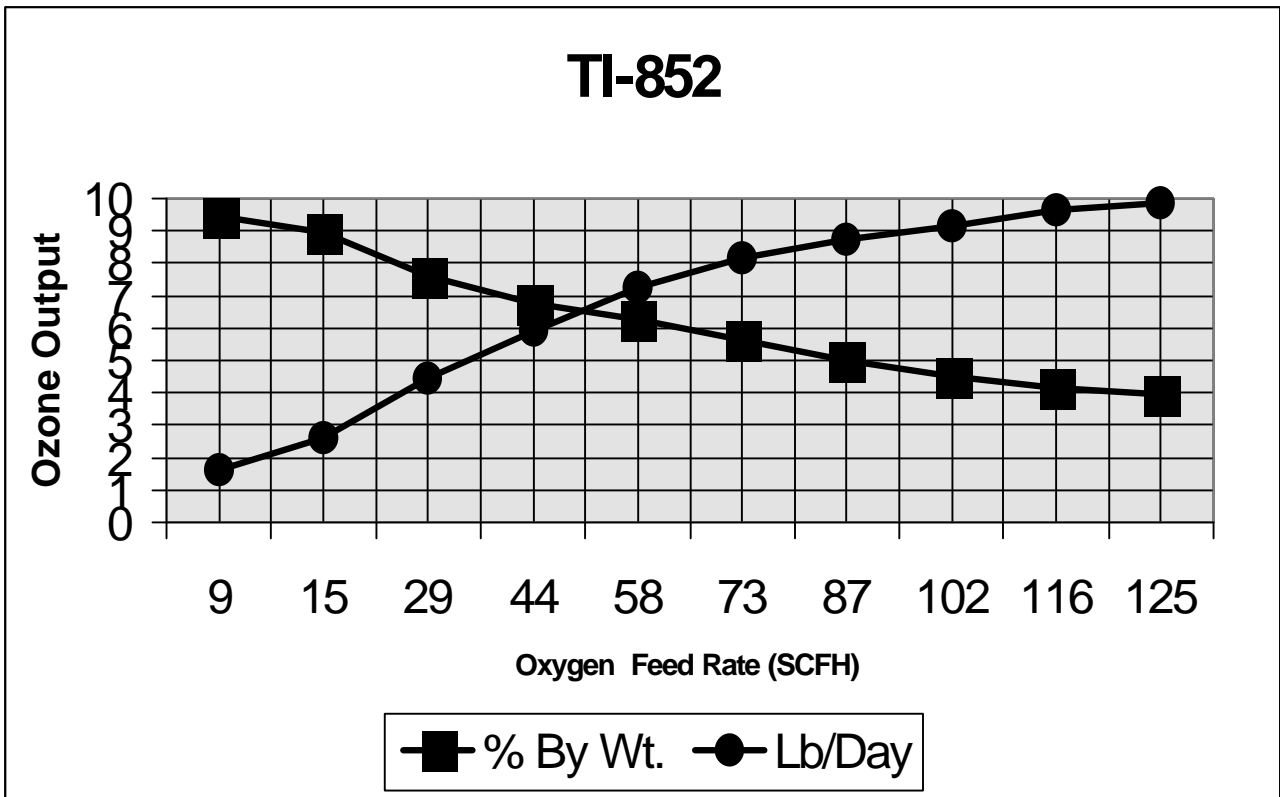
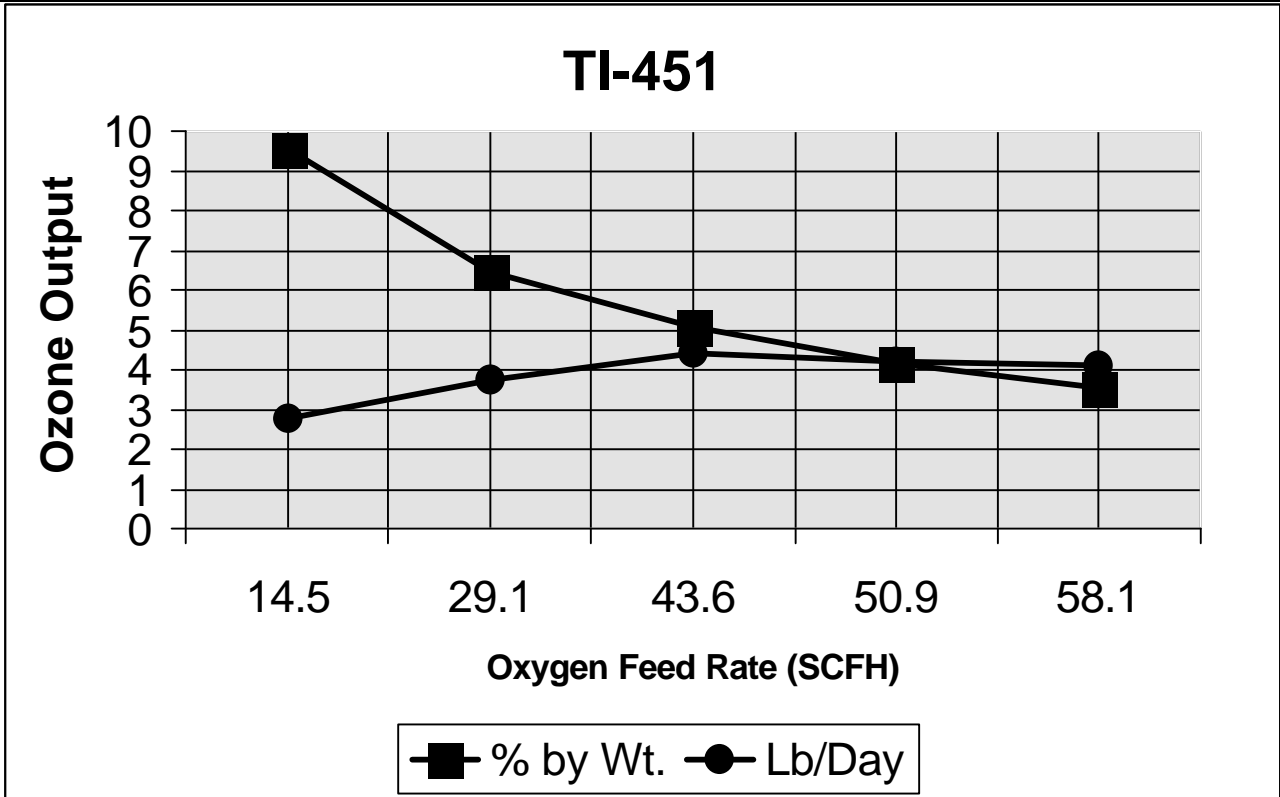
State-of-the-art, high output, competitively priced, water cooled ozone generators, “The Titanium Series”! These generators are utilized in a large variety of ozone applications demanding the economical production of large ozone requirements. By utilizing a variety of air preparation combinations, multiple output and concentration requirements can be achieved.

Model	Concentration %	O ₂ Flow (SCFH)	6 Liter O ₂ Concentrator	G/Hr.	Lbs/Day
TI-451	5.0	44	N/A	83	4.4
TI-852	5.0	87	N/A	165	8.7
TI-451	9.0	N/A	12 SCFH	40	2.0

Concentrations up to 10% by weight // Outputs up to 10 pounds per day

“TITANIUM” SERIES CD OZONE GENERATORS

MODELS TI-451 AND TI-852



*** Tested in accordance with WQA Testing Methodology Guidelines**

Section - 6

**DG Dryer
HD-5
HD-20**

Air Preparation / Dryer Series

DG DRYER
PART # 30076

HD-5
PART # 30061

HD-20
PART # 30026



Features:

- Dew-point s of -20°F to -60°F degrees
- Air flow rates from 0.5 to 40 cubic feet per hour
- Wall mountable
- Compact size

Benefits:

- May be utilized on a wide range of small ozone generators
- Lightweight and corrosion resistant
- Simple and reliable operation
- Easy to service

Part #	Model #
30076	DG Dryer
30061	HD-5
30061-25	HD-5-F*
30061-26	HD-5-F**
30026	HD-20
30026-01	HD-20-F

Refer to front of section for model designation.

- * - 220 VAC / 50 Hz
- * - 220 VAC / 60 Hz

Shipping & Lead Time

Dimensions:	DG Dryer:	W 5" x H 12" x D 4"
	HD-5:	W 6.6" x H 12" x D 3.6"
	HD-20:	W 10" x H 12" x D 4"
Shipping Weight:	DG Dryer & HD-5:	10 lbs.
	HD-20:	15 lbs.
Max. Lead Time:	10 days	

These models are the economical answer for the budget minded customer. This series is suitable for indoor or dry locations only. If installed outdoors, the units must be protected from the elements.

Model	Cubic ft / hr	Wattage	Dew-point	Voltage
HD-5	To 40	50 VA, 90 VA max	To -50°F	120 VAC 60 Hz
HD-20	To 40	50 VA, 90 VA max	To -60°F	120 VAC 60 Hz

Replacement parts are listed in the operation and maintenance manuals supplied with equipment. Ozotech, Inc. generators should be accompanied by air preparation.

Section - 7

**Power Prep Phoenix
OX-12
Onyx**

Oxygen Concentrator Series

Power Prep Phoenix

Features:

- Patented sieve module allows replacement of sieve material without changing the sieve module
- Dewpoint of -100° F
- Air flow rates to 6.6 @ 4 PSI
- Powder coated aluminum chassis
- Piston based design
- Reliable solid state electronics
- Wall mountable
- Heavy duty compressor
- Compact size

Benefits:

- May be used on a wide variety of small ozone generators
- Higher ozone performance
- Lightweight and corrosion resistant
- Simple and reliable operation
- **Easy to service**



Part #	Model #
30254	PP Phoenix
30254-25	PP Phoenix-F*
30254-26	PP Phoenix-F**

* - 220 VAC / 50 Hz
 ** - 220 VAC / 60 Hz

- 220 Vac models are CE certified to applicable emissions standards

Shipping & Lead Time

Dimensions: W 11.5" x D 9.25" x H 18.25"
Shipping Weight: 24 lbs.
Max. Lead Time: 10 days
 (This is a normally stocked item)

This NEW state-of-the-art oxygen concentrator utilizes pressure swing adsorption (PSA) air separation technology resulting in outstanding oxygen purity and superior dewpoint. The Power Prep Phoenix is the next generation lightweight, 3 liter oxygen concentrator able to boost outputs and concentration levels of ozone generators and has been enhanced for superior durability and reliability.

Replacement parts are listed in the operation and maintenance manuals supplied with equipment. Ozotech, Inc. generators must be accompanied by air preparation.

Model	O ² Content	Wattage	Unit Weight	A/C Voltage	Output Pressure	Max Air Flow (SCFH)
Power Prep Phoenix	Up to 55%	200	15 Lbs.	120 VAC 60 Hz or 230 VAC 50/60 Hz	4 PSI	6.6 SCFH

6 Liter Oxygen Concentrators

OX-12 Series



Features:

- **Product Dewpoint:** -100° F (-73° C)
- Air flow rates to 12.7 @ user defined pressure
- Produces oxygen from compressed air
- Piston based design
- Microprocessor controlled
- Heavy duty compressor
- Automatic and unattended operation
- Low operating cost
- Easy to install and maintain

Part #	Model #	Power Source
30282	OX1216	120 Vac, 60 Hz
30282-25	OX1225	220 Vac, 50 Hz
30282-26	OX1226	220 Vac, 60 Hz
30282-15	OX12105	100 Vac, 50 Hz
30282-16	OX12106	100 Vac, 60 Hz

Benefits:

- May be used on a wide variety of ozone generators
- Enhances ozone output performance
- Lightweight and corrosion resistant
- Simple and reliable operation
- Easy to service

Electrical Approvals

- NRTL certified compliance to UL 3101.1
- CSA
- CE compliant

Shipping & Lead Time

Dimensions:	W 17.25" x D 10.0" x H 26.75"
Shipping Weight:	63 lbs.
Shipping Dimensions	W 21" x D 12" x H 29"
Max. Lead Time:	10 days
<i>(This is a normally stocked item)</i>	

This state-of-the-art oxygen concentrator utilizes Pressure Swing Adsorption (PSA) air separation technology resulting in outstanding oxygen purity and superior dew-point. The OX12 is an industrial grade, powerful 6 liter concentrator engineered to deliver optimum air preparation and reliability where high ozone concentration is required.

Replacement parts are listed in the operation and maintenance manuals supplied with equipment. Ozotech, Inc. generators should be accompanied by air preparation.

Model	O ² Content	Power Consumption	Unit Weight	A/C Voltage	Output Pressure	Max Air Flow
OX-12	Minimum of 90%	350 Watts (Typical @90% Purity)	55 Lbs.	See Table Above	0-9 PSI	12.7 SCFH

6 Liter Oxygen Concentrators

Onyx Series



Features:

- **Product Dewpoint:** -100° F (-73° C)
- Air flow rates to 12.7 @ user defined pressure
- Produces oxygen from compressed air
- Piston based design
- Microprocessor controlled
- Heavy duty compressor
- Automatic and unattended operation
- Low operating cost
- Easy to install and maintain

Benefits:

- **Low cost alternative to the OX-12 Series**
- May be used on a wide variety of ozone generators
- Enhances ozone output performance
- Lightweight and corrosion resistant
- Simple and reliable operation
- Easy to service

Part #	Model #	Power Source
30282-01	OXY1216	120 Vac, 60 Hz
30283-25	OXY1225	220 Vac, 50 Hz
30283-16	OXY1226	100 Vac, 60 Hz

Electrical Approvals

- IEC-601-1
- ISO 8359
- CE 0459
- ISO 9002

Shipping & Lead Time

Unit Weight	54 Lbs
Dimensions:	W 15.7" x D 14.5" x H 28.5"
Shipping Weight:	64 lbs.
Shipping Dimensions	W 17" x D 15.5" x H 33.0"

This state-of-the-art oxygen concentrator utilizes Pressure Swing Adsorption (PSA) air separation technology resulting in outstanding oxygen purity and superior dew-point. A low cost alternative to the OX-12 where the installation site environment and the application do not require a rugged industrial type concentrator.

Replacement parts are listed in the operation and maintenance manuals supplied with equipment. Ozotech, Inc. generators should be accompanied by air preparation.

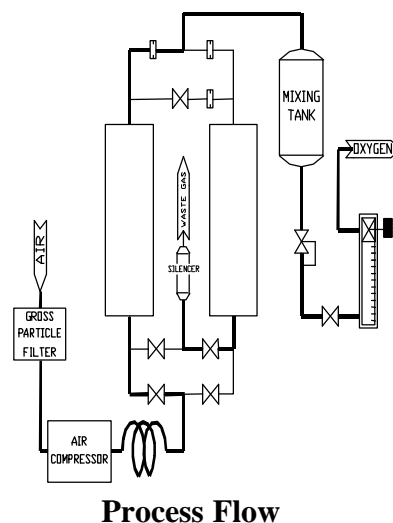
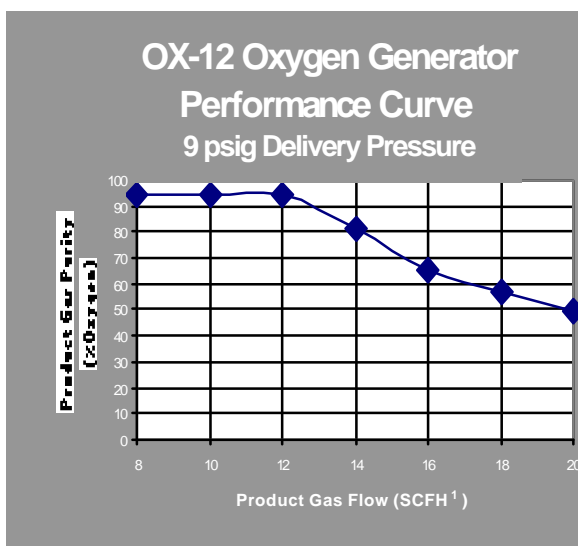
Model	O ₂ Content	Power Consumption	Output Pressure	Max Air Flow
Onyx	90% ± 3% @ (120 Vac) 87% ± 3% @ (220-240 Vac)	350 Watts (Typical)	0-9 PSI	12.7 SCFH

Oxygen Concentrator Summarized Theory of Operation

How does the PP Phoenix, OX-12 and Onyx generate up to 90% oxygen from air that only contains 20% oxygen?

The Pressure Swing Adsorption (PSA) Oxygen Generating Process

Air contains 21% oxygen, 78% nitrogen, 0.9% argon, and 0.1% other gases. Ozotech, Inc. Oxygen Generating Systems separate oxygen from compressed air through a unique Pressure Swing Adsorption (PSA) process. The PSA process uses molecular sieve (a synthetic zeolite), which attracts (adsorbs) nitrogen from air at high pressure and releases (desorbs) it at low pressure. Ozotech, Inc. generators use two vessels filled with molecular sieve as adsorbers. As compressed feed air flows through one of the vessels, the molecular sieve adsorbs nitrogen. The remaining oxygen passes through the vessel and exits as the product gas. Before the adsorber becomes saturated with nitrogen, the feed air is diverted to the second vessel. At that point, the sieve in the first vessel regenerates by desorbing the nitrogen through depressurization and purging it with oxygen from the second vessel. This process is then repeated in the second vessel to complete a cycle that allows the oxygen generator to deliver a constant flow of product oxygen at up to 90% purity. Under normal operating conditions, the molecular sieve is completely regenerative and will last indefinitely.



Air Preparation Maintenance Kits

A - Denotes positive pressure systems kits

GENERATOR MODEL	MAINTENANCE KIT #	PART #
POWER PREP PHOENIX	MKPPP-A	33173
OX-12	MKPP2450/TITAN-A	33160
Onyx	MKPP2450/TITAN-A	33160

Air Preparation Standard Accessories

Model	Check Valve	Flow Meter	Spare Fuse	Manual	Venturi Guide	Tubing	Accessory Packet
POWER PREP PHOENIX	—	T	—	T	—	—	T
OX-12	—	T	—	T	—	—	T
Onyx	—	T	—	T	—	—	T



Section - 8

**5-10 GPM
Bottled Water System**

**11-20 GPM
Bottled Water System**

**21-30 GPM
Bottled Water System**

**60 GPM
Bottled Water System**

Bottled Water System Series

5-10 GPM
Part # 30219

11-20 GPM
Part # 30220

21-30 GPM
Part # 30221

Features (All):

- Engineered for “turn key” operation
- Simple installation
- 4 wire, 220Vac, 50 or 60 Hz input
- Pre-plumbed and wired
- Designed for use with pre-treated water
- Aluminum extruded frame mounting
- **Engineered to meet FDA and IBWA ozone residual recommendations**
- FDA approved materials

Shipping & Lead Time:

(5-10 GPM)	(11-20 GPM)	(21-30 GPM)
Lead Time: 30 days	Lead Time: 30 days	Lead Time: 30 days
Shipping Wt: 550 lbs. (crated)	Shipping Wt: 600 lbs. (crated)	Shipping Wt: 650 lbs. (crated)
Dimensions: W30”x H60”x D25”	Dimensions: W38”x H70”x D30”	Dimensions: W38”x H85”x D48”

Ozone Equipment: (5-10 GPM)

- OZ4PC10 ozone generator
- Power Prep Phoenix
- 37 gal. SS contact tank
- Schedule 80 plumbing
- Natural Kynar venturi
- 1 hp stainless steel pump
- AR-1 air relief valve

Ozone Equipment: (11-20 GPM)

- OZ1BTU/SL ozone generator
- OX-12 oxygen concentrator
- 78 gal. SS contact tank
- Schedule 80 plumbing
- Natural Kynar venturi
- 1.5 hp stainless steel pump
- AR-1 air relief valve

Ozone Equipment: (21-30 GPM)

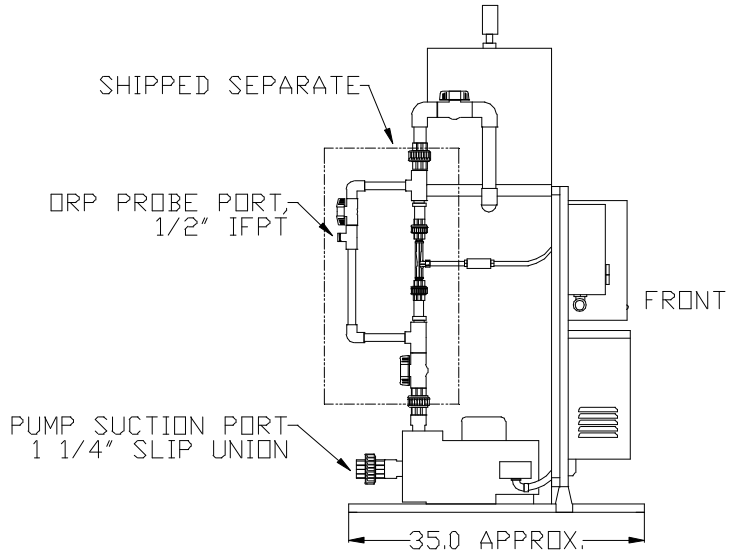
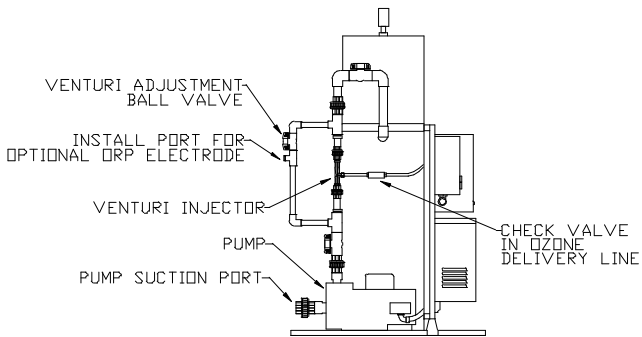
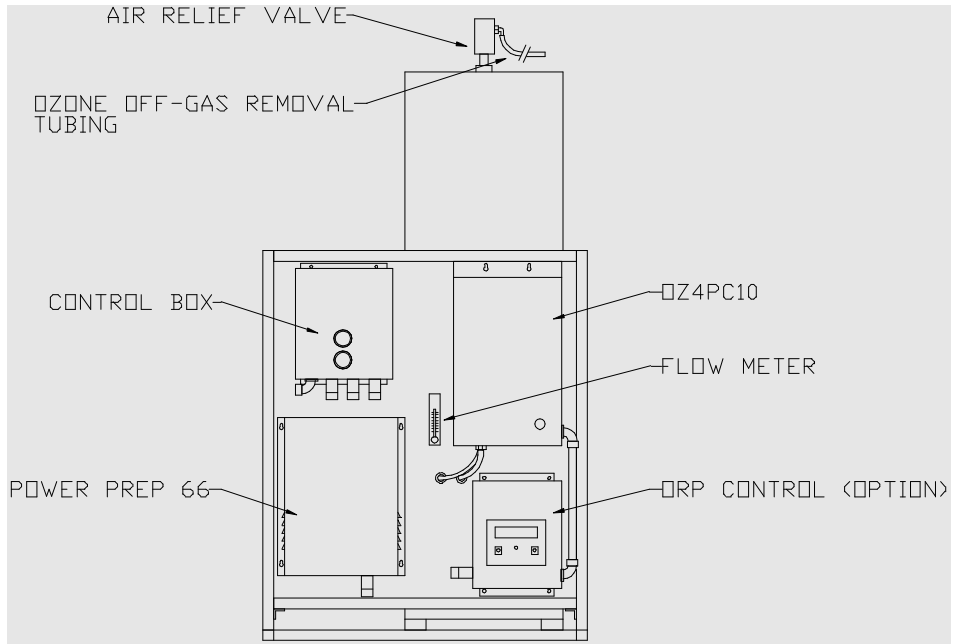
- OZ2BTU/SL ozone generator
- OX-12 oxygen concentrator
- 122 gal. SS contact tank
- Schedule 80 plumbing
- Natural Kynar venturi
- 2 hp stainless steel pump
- AR-1 air relief valve

Bottled water systems are engineered to ensure ozone residuals meet the FDA and IBWA mandated standards. These systems are designed to be used with pre-treated water. The use of high purity components such as natural Kynar venturi injectors, stainless steel tanks and rust proof extruded aluminum frames are among some of the features included with these systems.

Replacement parts are listed in the operation and maintenance manuals supplied with equipment. Ozotech, Inc. generators should be accompanied by air preparation.

30219	5-10 GPM FRAME MOUNTED BOTTLED WATER SYSTEM (220 Vac, 60Hz)
30219-01	5-10 GPM FRAME MOUNTED BOTTLED WATER SYSTEM (220 Vac, 50Hz)
30219-02	5-10 GPM FRAME MOUNTED BOTTLED WATER SYSTEM WITH ORP CONTROL (220 Vac, 60Hz)
30219-03	5-10 GPM FRAME MOUNTED BOTTLED WATER SYSTEM WITH ORP CONTROL (220 Vac, 50Hz)
30220	11-20 GPM FRAME MOUNTED BOTTLED WATER SYSTEM (220 Vac, 60Hz)
30220-01	11-20 GPM FRAME MOUNTED BOTTLED WATER SYSTEM (220 Vac, 50Hz)
30220-02	11-20 GPM FRAME MOUNTED BOTTLED WATER SYSTEM WITH ORP CONTROL (220 Vac, 60Hz)
30220-03	11-20 GPM FRAME MOUNTED BOTTLED WATER SYSTEM WITH ORP CONTROL (220 Vac, 50Hz)
30221	21-30 GPM FRAME MOUNTED BOTTLED WATER SYSTEM (220 Vac, 60Hz)
30221-01	21-30 GPM FRAME MOUNTED BOTTLED WATER SYSTEM (220 Vac, 50Hz)
30221-02	21-30 GPM FRAME MOUNTED BOTTLED WATER SYSTEM WITH ORP CONTROL (220 Vac, 60Hz)
30221-03	21-30 GPM FRAME MOUNTED BOTTLED WATER SYSTEM WITH ORP CONTROL (220 Vac, 50Hz)

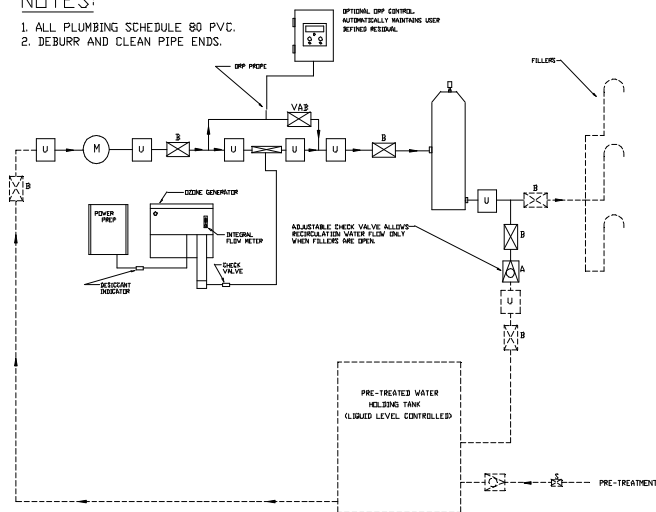
5-10 GPM



TYPICAL BOTTLED WATER SETUP WITH RECIRCULATION & TREATED HOLDING TANK

NOTES:

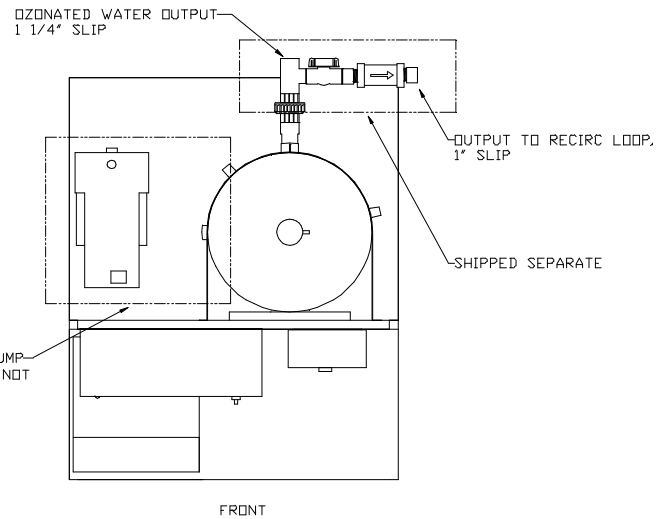
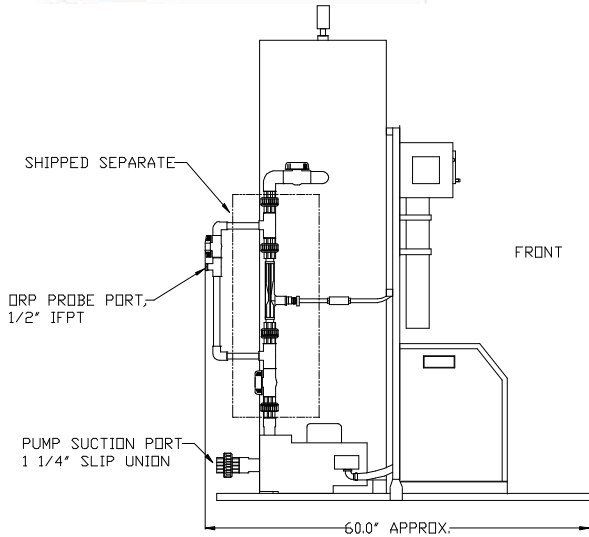
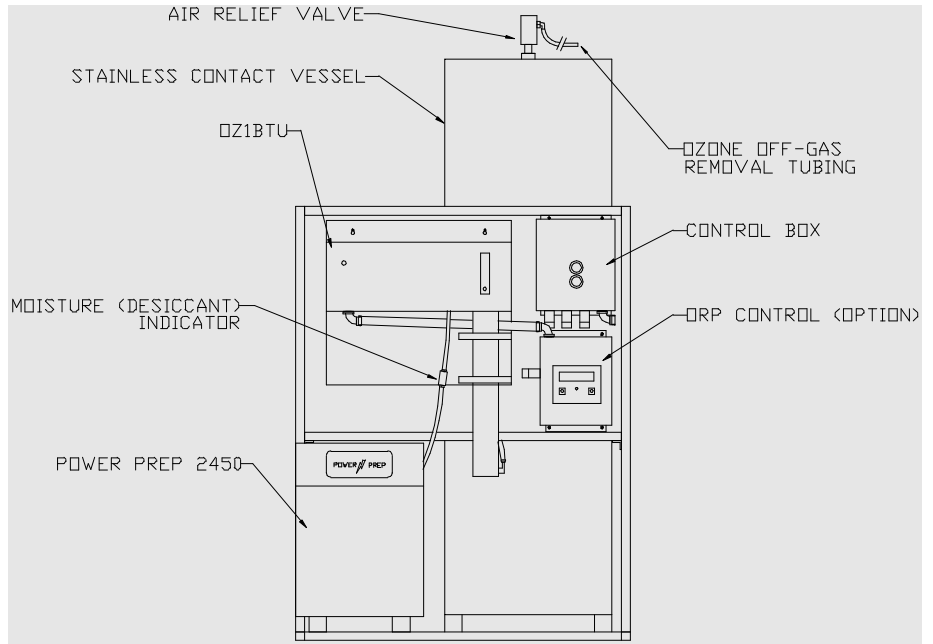
1. ALL PLUMBING SCHEDULE 80 PVC.
2. DEBURR AND CLEAN PIPE ENDS.



LEGEND:

- SOLID LINE INDICATES OZITECH SUPPLIED
- DOTTED LINE INDICATES CUSTOMER SUPPLIED
- CHECK VALVE ADJUSTABLE
- CHECK VALVE
- BALL VALVE
- VENTURI ADJUSTMENT BALL VALVE
- VENTURI
- UNION
- PUMP
- SOLENOID VALVE

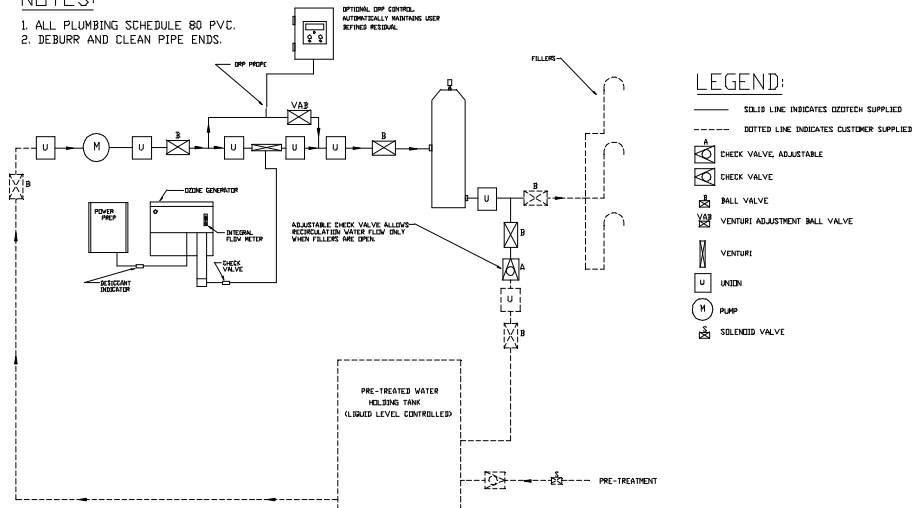
11-20 GPM



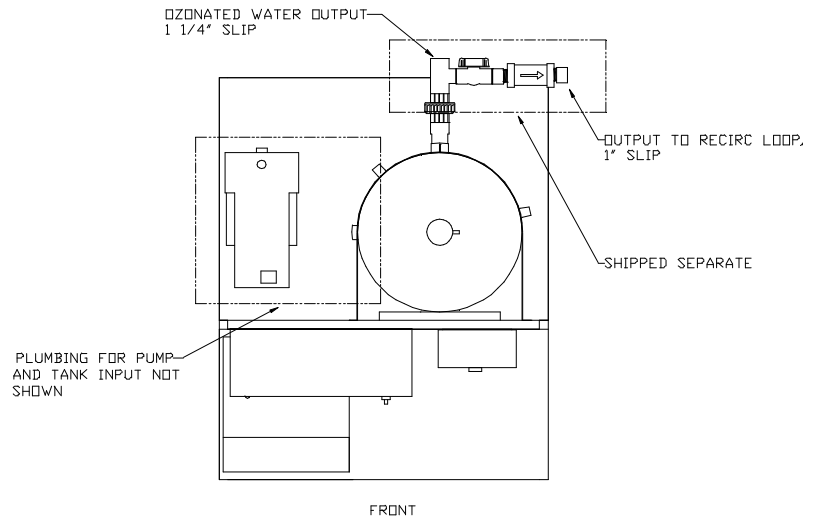
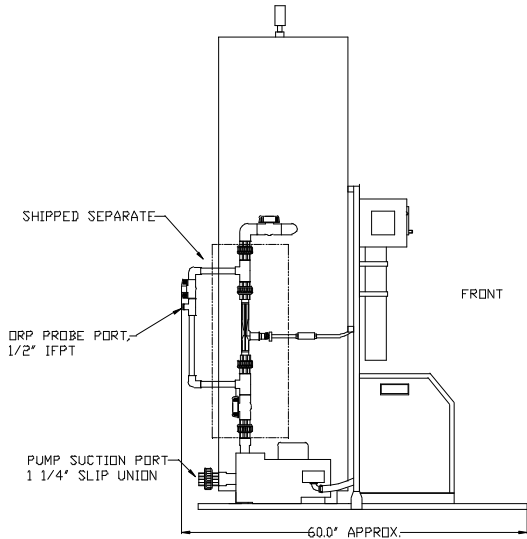
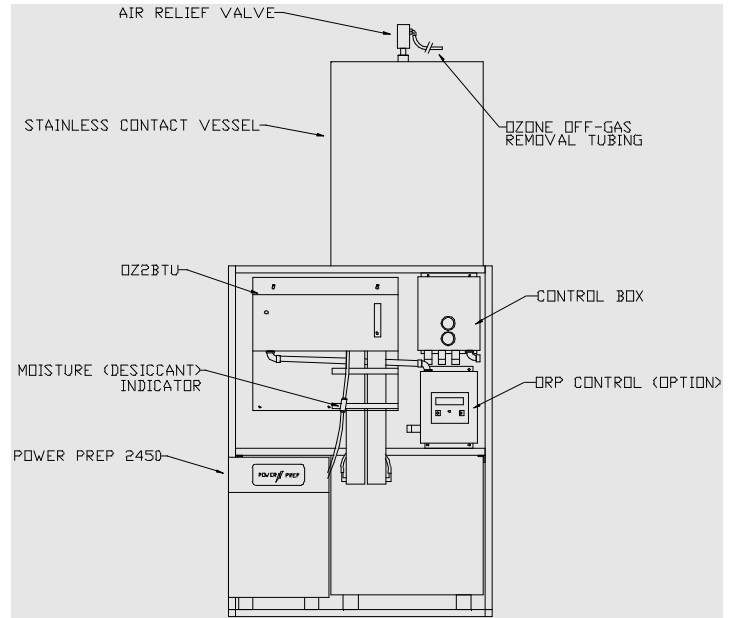
Typical Bottled Water Setup with Recirculation & Treated Holding Tank

NOTES:

1. ALL PLUMBING SCHEDULE 80 PVC.
2. DEBURR AND CLEAN PIPE ENDS.



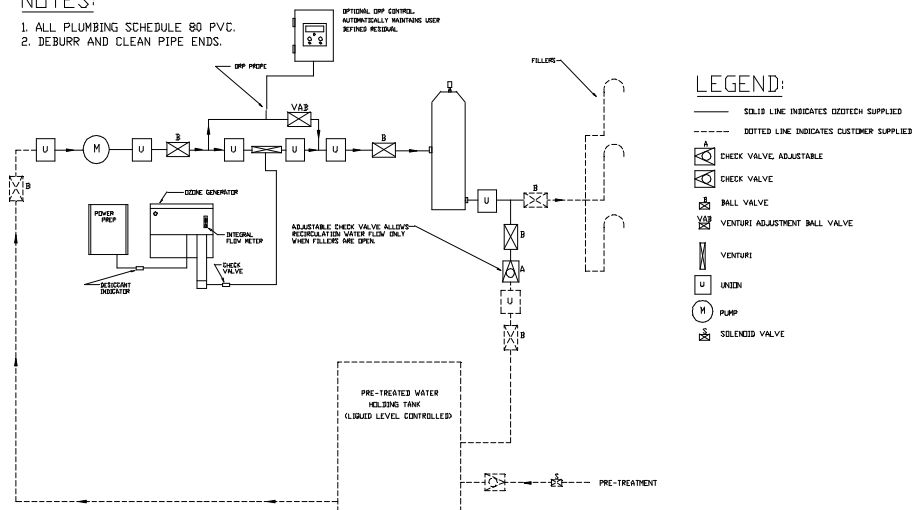
21-30 GPM



Typical Bottled Water Setup with Recirculation & Treated Holding Tank

NOTES:

1. ALL PLUMBING SCHEDULE 80 PVC.
2. DEBURR AND CLEAN PIPE ENDS.



System Generator and Air Preparation Maintenance Kits, Standard Accessories and System Options

Maintenance Kits

A - Denotes positive pressure systems kits

B - Denotes negative pressure systems kits

Generator	Maintenance Kit	Part #
OZ4PC10	MK1248PC-A	33118
OZ1BTU/SL	MK12BT-A	33115
OZ2BTU/SL	MK12BT-A	33115

System Standard Accessories

System Model	Warranty Card	Spare Fuse	O & M Manual	Installation Manual	C/D Removal
5-10 GPM	T	T	T	T	T
11-20 GPM	T	T	T	T	—
21-30 GPM	T	T	T	T	—

Available System Options

System Model	220V 60 Hz or 50 Hz	ORP Control
5-10 GPM Bottled Water System	T	T
11-20 GPM Bottled Water System	T	T
21-30 GPM Bottled Water System	T	T

Bottled Water System Series

60 GPM
Part # 30278

Features (All):

- Engineered for “turn key” operation
- Simple installation
- 4 wire 220V 60 Hz input
- Pre-plumbed and wired
- Designed for use with pretreated water
- Aluminum extruded frame mounting
- Engineered to meet FDA and IBWA ozone residual specifications
- FDA approved materials



Ozone Equipment: (60 GPM)

- OZ6BTU ozone generator
- 2- Power Prep Titans
- 2- 122 gal. SS contact tanks
- On-off control box
- Schedule 80 plumbing
- Natural Kynar venturi injector
- 5 hp stainless steel pump
- 2- AR-1 air relief valves

Shipping & Lead Time:

Weight:	1250 lbs
Dimensions:	64”W x 61”D x 93”H
Maximum lead-time:	30 days

Bottled water systems are engineered to ensure ozone residuals meet the FDA and IBWA mandated standards. These systems are designed to be used with pre-treated water. The use of high purity components such as natural Kynar venturi injectors, stainless steel tanks and rust proof extruded aluminum frames are among some of the features included with these systems.

Ozotech, Inc. can expand system capabilities to meet with different flow rates!!

Replacement parts are listed in the operation and maintenance manuals supplied with equipment. Ozotech, Inc. generators should be accompanied by air preparation.

30278 30-60 GPM frame mounted bottled water system (220 Vac, 60 Hz)

Optional ORP monitor (contact factory)

Section - 9

Point-of-Use

Flozone 2000

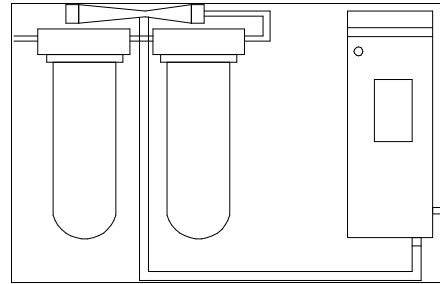
OZ1US

***“Low Cost”* Flozone 2003**

OEM / Point-of-Use Series

Flozone 2000 (Countertop Only)
Part # 30117

OZ1US (Under-sink Only)
Part # 30071



Features:

- Produces an ozone residual for food processing and handling
- Treats bacteria and other water borne parasites
- Removes bad taste, odor and sediment
- Removes chlorine and other chemicals

Benefits:

- Compact size
- Easy installation above or below countertop
- 0.6 GPM water treatment rate
- Automatic On/Off
- Operates at 12VDC, 120VAC or 220VAC

Application Guidelines

Filter	6" blended media
Water pressure	85 psi (max) 25 psi (min)
Turbidity	less than 3 NTU
Iron	less than 0.05 ppm
Manganese	less than 0.02 ppm

Shipping & Lead Time

Dimensions:	W 9.75" x D 9.25" x H 4"
Shipping Weight:	10 lbs.
Max. Lead Time:	Call factory
<u>25 unit minimum purchase applies</u>	

Extremely portable and great for R.V.'s, boats and kitchens. This personal drinking water system has been designed with the traveling consumer in mind. The Flozone 2000 provides a safe, economical alternative to bottled water.

Features:

- Patented "Cold Spark" corona discharge
- Life-time cell warranty
- 5 micron sediment prefilter
- Automatic activation
- Totally removes chlorine from water

Benefits:

- Compact size
- Easy installation above or below countertop
- 0.6 GPM water treatment rate
- Automatic On/Off
- Operates at 120VAC (18 Watts) or 220VAC

Application Guidelines

1st filter	5 Micron
2nd filter	Blended polishing
Water Pressure	85 psi (max) 25 psi (min)
Turbidity	less than 3 NTU
Iron	less than 0.05 ppm
Manganese	less than 0.02 ppm

Shipping & Lead Time

Dimensions:	W 15" x D 6" x H 17"
Shipping Weight:	28 lbs.
Max. Lead Time:	Call factory
<u>25 unit minimum purchase applies</u>	

This unique "point-of-use" residential drinking water system has been engineered to treat water in three stages through the use of particulate and specially blended filtration for pretreatment, then utilizing ozone to complete the treatment process.

Replacement parts are listed in the operation and maintenance manuals supplied with equipment.

“Low cost” Flozone 2003 Under-Sink POU System



Benefits:

- Consumes only a small amount of valuable space under the sink
- Highly concentrated dissolved ozone levels for effective microbiological reduction on sponges, wash cloths, countertops, dishes, fruits and vegetables
- No waste water
- Chemical free
- Oxygen enriched product water
- 12 VDC power source allows for optional use in RV’s and boats
- Removes the taste and odor of chlorine
- Removes musty, stale and metallic tastes and odors
- Removes rotten egg odor
- Dispenses almost one gallon per minute of water containing an ozone residual within the FDA recommended range for bottled water

Part #	Model #
30293	120VAC
30293-01	All Other Voltages (Including 12 VDC)

Note: Model 30293-01 does not include the AC to DC power transformer

Features:

- Stainless Steel corona discharge cell
- Multi-media blended filtration
- Solid-state electronics
- Simple under-the-sink installation
- Convenient, fashionable, long-neck faucet for dispensing ozonated water used for both rinsing and drinking
- “Power On” initiated when faucet is fully opened
- Extremely compact in size
- Convenient and easy filter replacement

Bonus Removal Capabilities:

Contaminant	Raw Water	Post Flozone
Chlorine	75 ppm	.01 ppm
Arsenic	5 ppm	.01 ppm
Hydrogen Sulfide	10 ppm	.01 ppm
Lead	2.05 ppm	.10 ppm
Mercury	1.0 ppm	.001 ppm

Flozone 2003 Specifications

Weight	5 lbs
Size.....	10”W x 11”H x 2.5”D
Color.....	Silver chromate
Flow rate.....	.6 to .7 gallons per min. at 50 psi
Daily capacity.....	Up to 1008 gallons
Current & voltage.....	350 milli-amps @ 12 VDC
Maximum & minimum water pressure.....	85 psi max, 25 psi min.
Input water turbidity.....	3 NTU’s (Normal Turbidity Units) maximum
Ozone dosage.....	Approximately 1.5 grams per meter cubed
Ozone residual.....	.1 to .4 mg/l at 50 psi typical *
* .1 to .4 mg/l represents FDA required ozone residual levels for bottled water	

Shipping & Lead Time

Dimensions:	W 15” x H 7” x D 15”
Shipping Weight:	7 lbs.
Max. Lead Time:	10 days

Section - 10

AIR PURIFICATION

Mini-Max

Mini-Max

Part # 30248



Features:

- Ultra-reliable cold plasma CD technology – No plates to clog up or short out
- 500 mg/hr ozone output
- Rugged powder-coated aluminum chassis
- Variable or timed output
- Low 24 watt power consumption
- Portable
- Low maintenance

Benefits:

- Compact size, consistent ozone output, rugged enclosure and portability make this unit perfect for many applications. Perfect for hotel/motel room treatment
- Compact size
- High reliability
- Lightweight and corrosion resistant
- Easy to service

Part #	Model #
30248	OZ1BTAUE-T
30248-01	OZ1BTAUE-F/T
30248-02	OZ1BTAUE-V
30248-03	OZ1BTAUE-F/V

- 220 Vac models are CE certified to applicable emissions standards

High-tech portable device for the control of noxious odors, toxic gases, bacteria, virus, mold and mildew through oxidation. These units destroy organic odor and fumes through the principle of oxidation.

Note: Ozone accumulation varies with odor intensity and air temperature.

Treats : Motel rooms – Meeting rooms – Homes – Apartments – Tobacco odors
Animal odors – Fire damage – Formaldehyde fumes – Sewage odors
Ammonia odors – Chemical odors – Veterinarian clinics

Specifications:

Power Consumption.....	24 Watts	Turn-down ratio.....	0 to 100%
Weight.....	16 Pounds	On/Off switch.....	Rocker Type
Fan.....	105 CFM	Color.....	Black
Dimensions.....	9" D x 9" W x 7"H	Ozone output.....	500 mg/hr

Replacement parts are listed in the operation and maintenance manuals supplied with equipment

Shipping & Lead Time

Dimensions:	12"W x 12"D x 11" H
Shipping Weight:	12 lbs.
Max. Lead Time:	10 days

Section - 11

X-1 PILOT SCALE SYSTEM

**OZONE RESISTANT
SOLENOID VALVE**

**TERMINATOR—OZONE
DESTRUCT UNITS**

PVC/SS MOISTURE TRAPS

**AMBIENT OZONE
SENSORS**

**DISSOLVED OZONE
METERS**

**ORP CONTROLLERS &
MONITORS**

X-1 PILOT SCALE OZONE TREATMENT SYSTEM

**P-SOTS
PART # 31267**

Features:

- Only two simple plumbing connections
- Completely turn-key
- Plugs into any standard 120 VAC outlet
- The total pilot system fits within a 3' x 3.5' footprint
- Light weight yet heavy duty aluminum extruded frame

Benefits:

- On-site measurement of ozone demand and half-life (Critical for analysis of optimal dosage and required Ct credits).
- Prediction of full-scale performance
- Familiarity with state-of-the-art technology.
- **HUGE** cost savings potential realized by the ability to precisely determine required dosages



Shipping & Lead Time

Dimensions:	W 39" x H 80" x D 42"
Shipping Weight:	575 lbs.
Max. Lead Time:	Call factory for availability

Theory of Operation:

A scaled-down portion (11 USGPM) of the actual water being evaluated for treatment is piped to the Pilot Scale Ozone Treatment System (PSOTS). A measured ozone dosage is applied to this water and given time to react. Samples are then taken, either after a single pass through the system or after multiple passes. Subsequent laboratory analysis of the water sample yields information of the overall efficacy of ozone for the intended treatment process.

Upon satisfaction with the water quality, data collected during the treatment process is used by Ozotech, Inc., engineers to determine the precise ozone dosage required to achieve the satisfactory results.

Economical Equipment Programs:

- **Short Term Rentals**
- **Purchase**
- **Rent to Own**

Ozone Resistant Solenoid Valve

OZ-ORSV (120VAC) Part # 32156 OZ-ORSV (24VAC) Part # 32147 OZ-ORSV (230VAC) Part # 32168



Features:

- **Most economically priced ozone resistant solenoid available in the market place**
- Constructed entirely of ozone resistant materials and specially formulated industrial PVC
- Internal metering system mechanically self-cleaning
- Opening and closing action smooth and shock-free
- Available in 120VAC, 230VAC & 24VAC
- Flow ranges from 2 to 25 GPM
- Pressure range from 10 to 150 PSI
- Manual external bleed
- Debris tolerant design
- High flow, low friction loss design

Part #	Model #
32156	OZ-ORSV 120VAC
32147	OZ-ORSV 24VAC
32168	OZ-ORSV 230VAC

Benefits:

- Heavy-duty ozone resistant type 1 PVC
- All wetted parts are a proprietary selection of ozone resistant materials
- Encapsulated solenoid
- Easily serviced without removal from the system
- Manual external bleed aids in removing entrained air / eliminates associated problems (water hammer)
- Field proven, rugged, and ozone resistant

Shipping & Lead Time

Dimensions: W 15" x H 7" x D 15"
Shipping Weight: 2 lbs.
Max. Lead Time: 10 days
 (This is a normally stocked item)

With a rugged Type-I PVC body and a proprietary mix of proven ozone-resistant materials of construction, the OZ-ORS is the market's first and only low-cost, high-flow (CV = 15) ozone compatible solenoid valve.

FLOW RATE – GPM

Model	Size	2	5	10	15	20	30	40
OZ – ORSV	1"	3.82	3.00	2.20	1.90	3.10	5.10	11.40

Pressure Loss – psi

Terminator Series Ozone Destruct Units

Terminator 25
Part # 30168-02

Terminator 120
Part # 30172-02

Terminator 250
Part # 30169

Features:

- Surface mountable
- Made from 316L stainless steel
- Unique design eliminates troublesome internal heat element
- **Lowest cost ozone destruct units on the market**



Benefits:

- **Simplifies compliance to EPA and OSHA ozone exposure limits**
- Value added addition to any ozone application
- Helps to prevent oxidation and degradation of external equipment and parts that would otherwise be exposed to ozone off-gas at the installation site

Part #	Model #
30168-02	Terminator 25 SCFH
30172-02	Terminator 120 SCFH
30169	Terminator 250 SCFH

<u>Terminator 25</u> <u>Shipping & Lead Time</u>	<u>Terminator 120</u> <u>Shipping & Lead Time</u>	<u>Terminator 250</u> <u>Shipping & Lead Time</u>
Dimensions: W 16" x H 8" x D6" Shipping Weight: 5 lbs. Max. Lead Time: 10 days	Dimensions: W 21" x H11" x D9" Shipping Weight: 10 lbs. Max. Lead Time: 10 days	Dimensions: W 37" x H9" x D9" Shipping Weight: 16 lbs. Max. Lead Time: 10 days

Model	Maximum Rated Ozone Flow for Destruction
Terminator 25	25 SCFH
Terminator 120	120 SCFH
Terminator 250	250 SCFH

PVC/SS Moisture Traps

Part Number	Description	Where Used
33207	1.5" PVC Moisture Trap	Used with T-25
33208	3" PVC Moisture Trap	Used with T-120 & T-250
33209	Stainless Steel Moisture Trap	Used with T-25, T-120, T-250

Ozone Gas Detector Alarm System

Features:

- Precision monitoring and control of ambient ozone levels.
- Transmitter and control box are housed in rugged NEMA 4X enclosures.
- Optional LCD display provides local indication of gas concentration on the front of the enclosure.
- Factory preset at .3 PPM or at customer's desired level
- Direct measuring sensor
- 25' interconnect cable provided
- Loop-powered electronics

Benefits:

- Provides the accuracy needed for compliance to OSHA, EPA and other regulatory agency regulations
- Long lasting sensor element
- Employees can be assured that they are working in a safe environment



Part #	Model #
31284	B-12

Specifications

Accuracy:	Generally $\pm 5\%$ of value
Repeatability:	$\pm .5\%$ of span
Enclosure:	NEMA 4X
Operating temperature:	0° to +50° C
Sensor materials:	Noryl
Dimensions:	
Transmitter	4.0" W x 4.0" L x 2.25" D
Controller	8.0" W x 8.0" L x 5.0" D

Shipping & Lead Time

Dimensions: W 10" x H 10" x D 10"

Shipping Weight: 5 lbs.

Max. Lead Time: 4 weeks

(This is a normally stocked item)

The model B-12 is a rugged industrial gas detector system used for monitoring ambient ozone levels in applications where workers may be exposed to high levels of ozone due to excessive off-gas or leaks within the ozone system. Typical applications include bottled water lines, industrial laundry, swimming pools, etc.. Note: Ozotech, Inc. also manufactures ozone destruct devices for even greater control.

Dissolved Ozone Meters

Low Cost Dissolved Ozone Meter

Features:

- No additional test reagents or vacuum ampules to purchase. Therefore, no additional “per test” costs.
- No fouling of the sensor. No special probe installation. No sensor to water contact.
- Easily understood by non-technical personnel. No confusing chemistries or restrictions.
- Easy to check calibration by standard kits.
- Equally suitable for both bench and field measurement
- No interferences from chlorine or salinity.

Specifications:

- Range: .1 to .7 ppm (mg/l) Other ranges possible by sample dilutions.
- Accuracy: Approximately .1 ppm (mg/l) when operated near room temperature.
- Response Time: Reading at 1 1/4 minutes. Reading is independent of the half-life of the ozone in the sample.
- Measurement Principle: HMOS (heated metal oxide semi-conductor) sensor in headspace.
- Bargraph Display: Green: 0.0 to .20 ppm, Yellow: .25 to .40 ppm, Red: .50 to .70 ppm.
- Size: 85 x 35 x 60 mm (3 1/4” x 1 3/8” x 2 3/8”)
- Weight: 154 grams (6 oz)
- Power Requirements: 12-24 volts DC, 300 ma. AC adapters available worldwide.
- Batteries: Self-contained NiMH. About 8 hour capacity. Re-charged by AC adapter overnight.



Product Ordering Information

Item	Part Number
EZ-10W Dissolved Ozone Meter	31294

Ozone Measurement Equipment-ORP

Dual Input ORP/pH Analyzer and Controller

Features:

- Single/Dual sensor input and dual 4-20 mA outputs
- Exclusive quick start programming
- Three fully programmable alarms
- Clear,easy to read, two line, back lit display is easily customized to read in English, French, German, Italian or Spanish
- Temperature correction algorithms.
- NEMA 4X enclosure for surface mounting

Specifications:

- Measurement ranges: pH= 0-14 , ORP= -1500 to + 1500 mV.
- Dimensions: 6.10 X 6.10 X 3.72 inches
- Input: Accepts any combination of one or two pH, ORP/Redox, or conductivity sensors.
- Outputs: Two 4-20 mA or 0-20 mA isolated outputs. Continuously adjustable. Linear or logarithmic. Maximum load 600 ohms.
- Relays: Form C, single pole, double throw, epoxy sealed
- Shipping weight = 4 pounds (2.0 kg)



Part #	Model #
31283	ORP/pH analyzer
32207	ORP Probe - dual junction
32208	pH probe - dual junction

Handheld ORP Monitor with Probe

Features:

- Probe with BNC connection and 10 ft. cable
- Full platinum band (not a wire strand as in pens and lesser quality electrodes).
- Equally suitable for both bench and field measurement

Specifications:

- Can be used with either an AC adapter kit or a regular 9-volt battery.
- 2 year warranty on monitor
- Enclosure is not water proof and must be operated on a dry surface.
- Accuracy to ± 1 mV



Item	Part #
Handheld ORP	32169
Probe, ORP, 1/2" MPT	32035
ORP Calibration Solution	31066

Panel Mount ORP Controller

Features:

- 1/4 DIN — ideal for panel mounting
- Two independent SPDT relays for on/off control
- BNC connection for ORP electrodes
- Available with or without Nema enclosure

Specifications:

- Measures ORP from -1900 to +1900 mV
- Measuring resolution = 1 mV
- Set point hysteresis = ± 10
- Shipping weight = 8 pounds



Item	Part #
ORP, Enclosed, 115 Vac	30105
ORP, Enclosed, 230 Vac	30134
ORP, Panel Mount Version	L-5802